

ISHTA CONTRACT I-08-5540

ARTICULATING OPEN CELL REVETMENT UNITS

DRAWING INDEX:

T-1 - TITLE SHEET

P-1 & 2 - PLAN VIEW LAYOUT

D-1 - TYPICAL DETAILS

PRELIMINARY:

INFORMATION CONTAINED IN THIS DRAWING IS TO BE USED ONLY AS AN AID TO THE BUYER AND IS NOT TO BE CONSTRUED AS ENGINEERING ADVICE OR AS A WARRANTY AS TO THE QUANTITY REQUIRED OR THE SUITABILITY OF THE FABRIC OR BLOCK FOR A PARTICULAR USE. AUTHORIZATION TO SHIP FABRIC OR BLOCK DESCRIBED HERE EITHER WRITTEN OR VERBAL WILL BE RECOGNIZED AS BUYER'S CONFIRMATION OF THE ACCURACY OF THESE DRAWINGS ON CREDIT WILL BE ALLOWED FOR ERROR AFTER REVIEW AND ACCEPTANCE BY CLIENT.

REVISIONS

DATE:	DESCRIPTION:
9-8-08	Engineer requested toe be removed.

PROJECT NAME:

ISHTA
CONTRACT I-08-5540

PREPARED FOR:

ERO-TEX
SCHAUMBURG, IL

ARTICULATING OPEN CELL
REVETMENT UNIT

DATE: 06-17-08	DRAWING NAME: TITLE SHEET
PREPARED BY: KM	SCALE: NOT TO SCALE

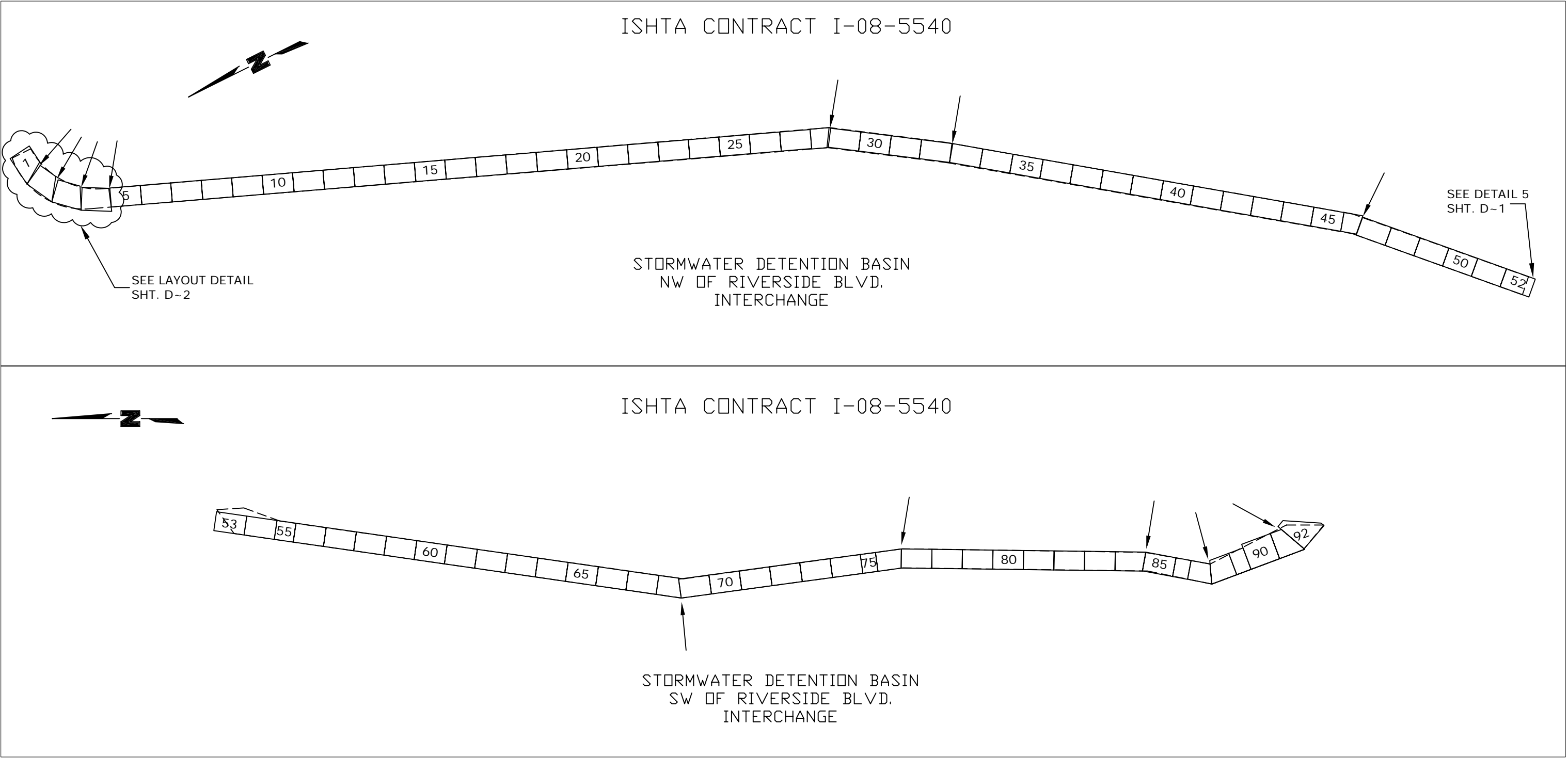
T
2
1

NOTES:

- 1. ALL MAT LENGTHS ARE AS SPECIFIED ON THE SPREADSHEET.
- 2. ALL MAT WIDTHS ARE AS SPECIFIED ON THE SPREADSHEET.
- 3. TOE ANCHORS AND SLOPE FACTORS HAVE BEEN ADDED TO LENGTHS OF ALL MATS.
- 4. ALL VOIDS GREATER THAN 2" BETWEEN MATS SHALL BE FILLED WITH 4,000PSI CONCRETE.
- 5. ———> INDICATES GROUTING LOCATIONS. SEE DETAIL 3, SHT. D~1.
- 6. — — — INDICATES AREA OF COVERAGE TAKEN FROM PDF PLANS FOR ISHTA CONTRACT I-08-5540.

DITCH MAT QUANTITIES:

REGULAR MAT	3,135 SQ. FT.
SPECIAL MAT	441 SQ. FT.
TOTAL	3,576 SQ. FT.



PRELIMINARY:

INFORMATION CONTAINED IN THIS DRAWING IS TO BE USED ONLY AS AN AID TO THE BUYER AND IS NOT TO BE CONSTRUED AS ENGINEERING ADVICE OR AS A WARRANTY AS TO THE QUANTITY REQUIRED OR THE SUITABILITY OF THE FABRIC OR BLOCK FOR A PARTICULAR USE. AUTHORIZATION TO SHIP FABRIC OR BLOCK DESCRIBED HERE EITHER WRITTEN OR VERBAL WILL BE RECOGNIZED AS BUYER'S CONFIRMATION OF THE ACCURACY OF THESE DRAWINGS ON CREDIT WILL BE ALLOWED FOR ERROR AFTER REVIEW AND ACCEPTANCE BY CLIENT.

REVISIONS	
DATE:	DESCRIPTION:
9-8-08	Engineer requested toe be removed.

PROJECT NAME:
ISHTA CONTRACT I-08-5540

PREPARED FOR:
ERO-TEX SCHAUMBURG, IL

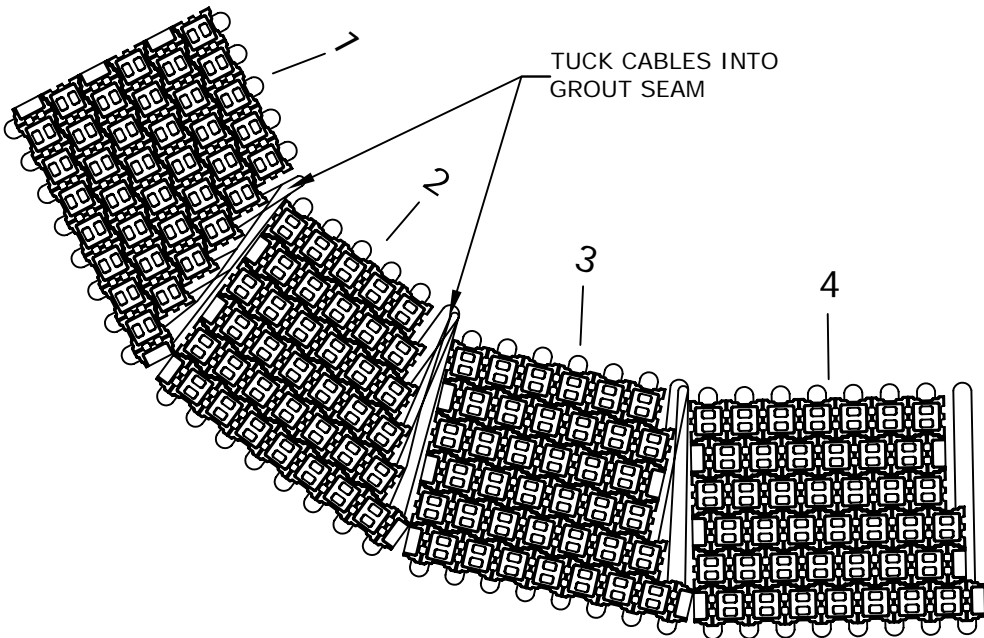
ARTICULATING OPEN CELL REVETMENT UNIT	
DATE:	SCALE:
06-17-08	NOT TO SCALE
DRAWN BY:	DRAWING NAME:
KM	PLAN VIEW LAYOUT

NOTES:

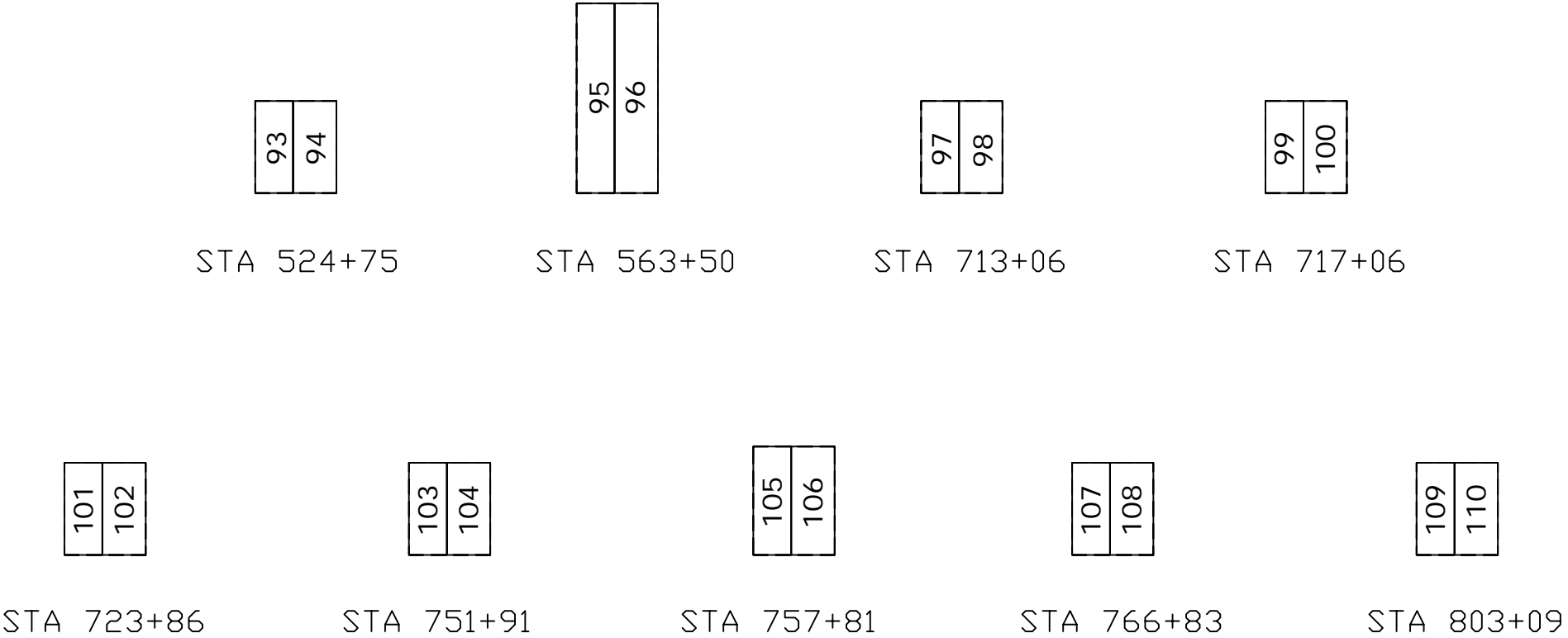
- 1. ALL MAT LENGTHS ARE AS SPECIFIED ON THE SPREADSHEET.
- 2. ALL MAT WIDTHS ARE AS SPECIFIED ON THE SPREADSHEET.
- 3. TOE ANCHORS AND SLOPE FACTORS HAVE BEEN ADDED TO LENGTHS OF ALL MATS.
- 4. ALL VOIDS GREATER THAN 2" BETWEEN MATS SHALL BE FILLED WITH 4,000PSI CONCRETE.
- 5. — — — INDICATES AREA OF COVERAGE SUPPLIED TO ERO-TEX FOR ISHTA CONTRACT I-08-5540.

OUTLET MAT QUANTITIES:

REGULAR MAT	2,610 SQ. FT.
TOTAL	2,610 SQ. FT.



LAYOUT DETAIL
OF MATS 1-4



OUTLET SLASH PAD
PROTECTION LOCATIONS

PRELIMINARY:

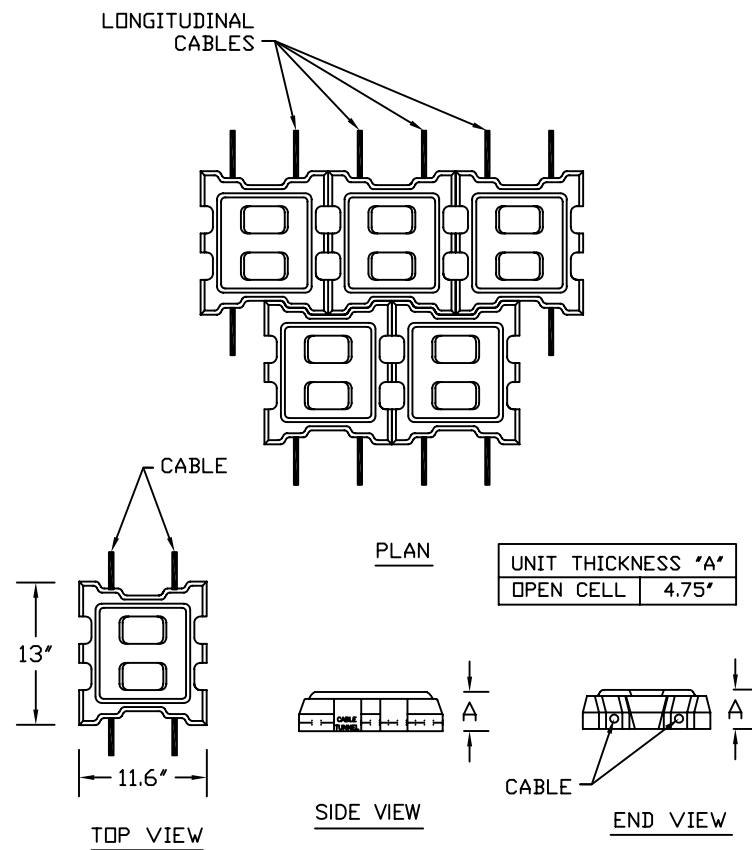
INFORMATION CONTAINED IN THIS DRAWING IS TO BE USED ONLY AS AN AID TO THE BUYER AND IS NOT TO BE CONSTRUED AS ENGINEERING ADVICE OR AS A WARRANTY AS TO THE QUANTITY REQUIRED OR THE SUITABILITY OF THE FABRIC OR BLOCK FOR A PARTICULAR USE. AUTHORIZATION TO SHIP FABRIC OR BLOCK DESCRIBED HERE EITHER WRITTEN OR VERBAL WILL BE RECOGNIZED AS BUYER'S CONFIRMATION OF THE ACCURACY OF THESE DRAWINGS ON CREDIT WILL BE ALLOWED FOR ERROR AFTER REVIEW AND ACCEPTANCE BY CLIENT.

REVISIONS	
DATE:	DESCRIPTION:
9-8-08	Engineer requested toe be removed.

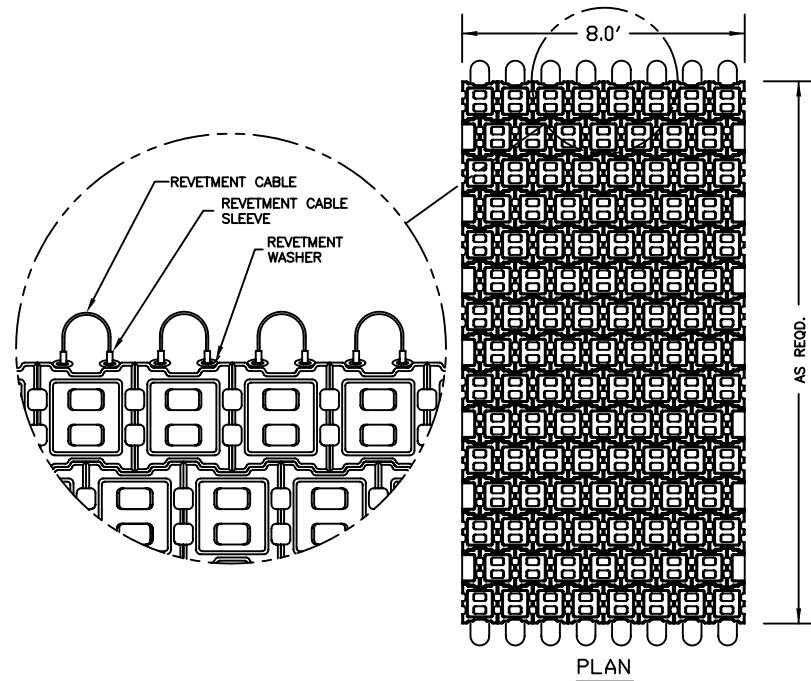
PROJECT NAME:
ISHTA CONTRACT I-08-5540

PREPARED FOR:
ERO-TEX SCHAUMBURG, IL

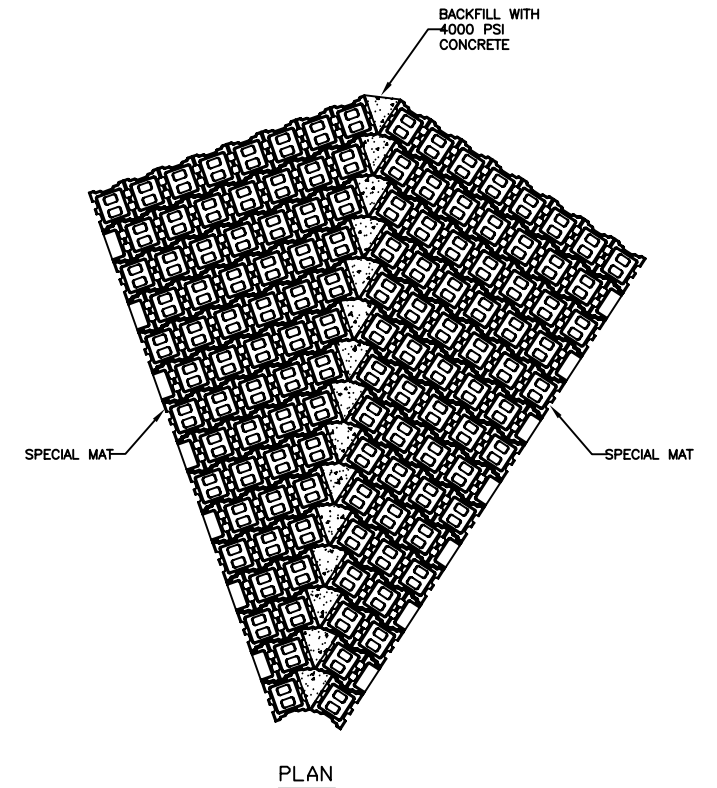
ARTICULATING OPEN CELL REVETMENT UNIT	
DATE:	SCALE:
06-17-08	NOT TO SCALE
DRAWN BY:	DRAWING NAME:
KM	PLAN VIEW LAYOUT



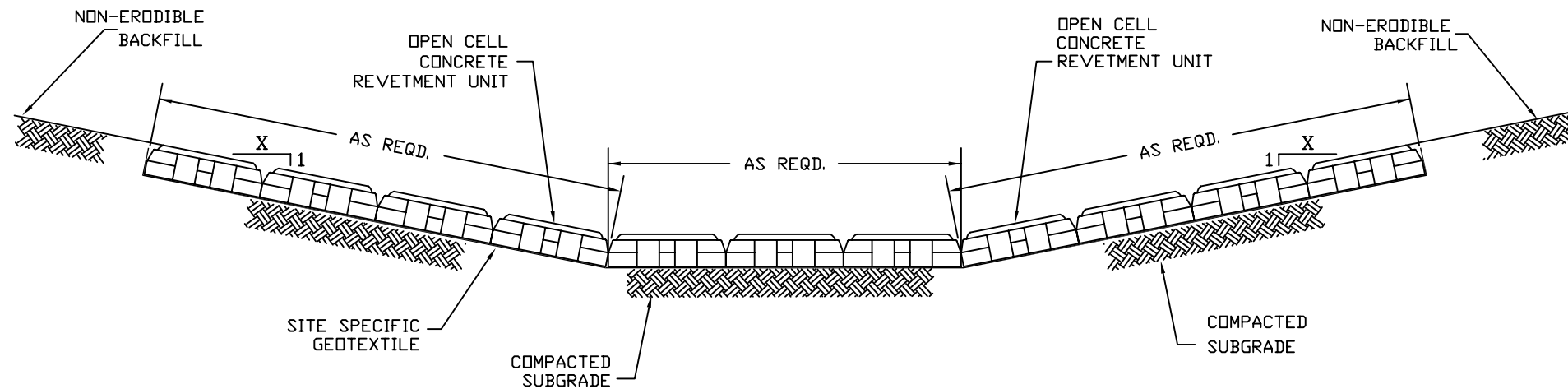
1
D1 UNIT DIMENTIONS
NOT TO SCALE



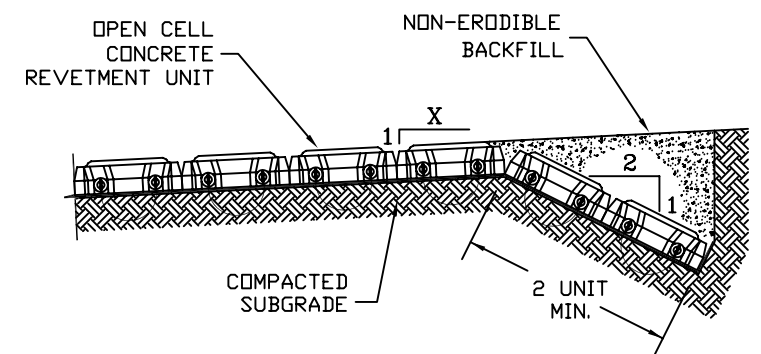
2
D1 TYPICAL MATTRESS
NOT TO SCALE



3
D1 SPECIAL MAT/
GROUT SEAM
NOT TO SCALE



4
D1 TYPICAL SECTION
NOT TO SCALE



5
D1 FLANK SECTION
NOT TO SCALE

PRELIMINARY:

INFORMATION CONTAINED IN THIS DRAWING IS TO BE USED ONLY AS AN AID TO THE BUYER AND IS NOT TO BE CONSTRUED AS ENGINEERING ADVICE OR AS A WARRANTY AS TO THE QUANTITY REQUIRED OR THE SUITABILITY OF THE FABRIC OR BLOCK FOR A PARTICULAR USE. AUTHORIZATION TO SHIP FABRIC OR BLOCK DESCRIBED HERE EITHER WRITTEN OR VERBAL WILL BE RECOGNIZED AS BUYER'S CONFIRMATION OF THE ACCURACY OF THESE DRAWINGS ON CREDIT WILL BE ALLOWED FOR ERROR AFTER REVIEW AND ACCEPTANCE BY CLIENT.

REVISIONS	
DATE:	DESCRIPTION:
9-8-08	Engineer requested toe be removed.

PROJECT NAME:
ISHTA CONTRACT I-08-5540

PREPARED FOR:
ERO-TEX SCHAUMBURG, IL

ARTICULATING OPEN CELL REVETMENT UNIT	
DATE:	SCALE:
06-17-08	NOT TO SCALE
DRAWN BY:	DRAWING NAME:
KM	TYPICAL DETAILS

D-1