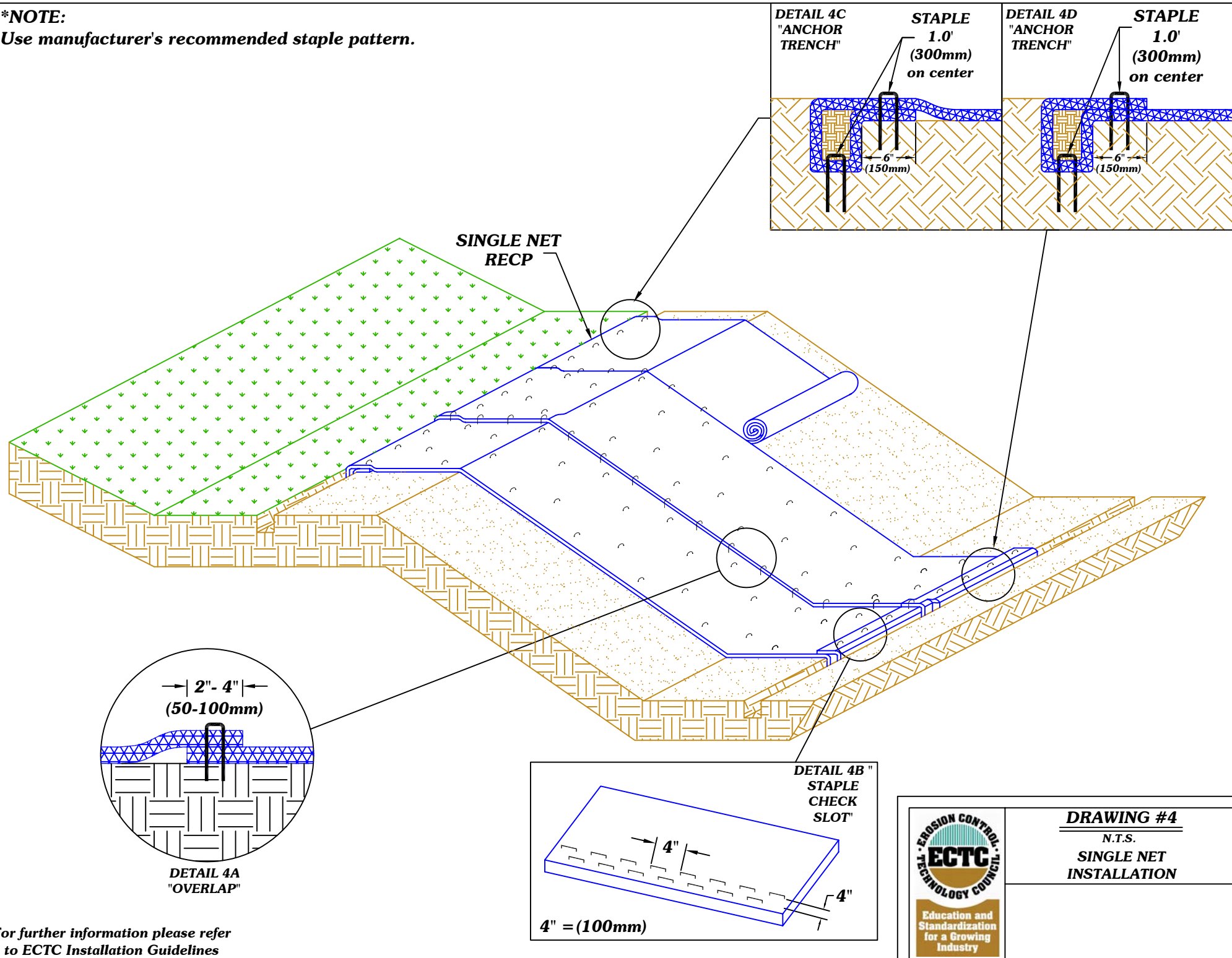
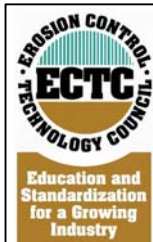



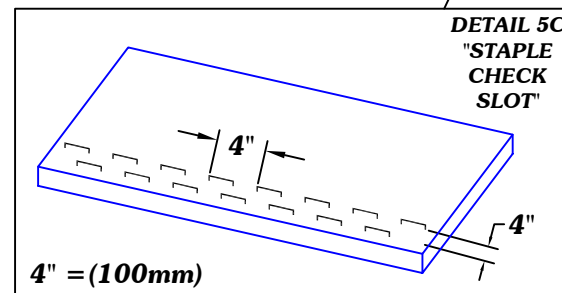
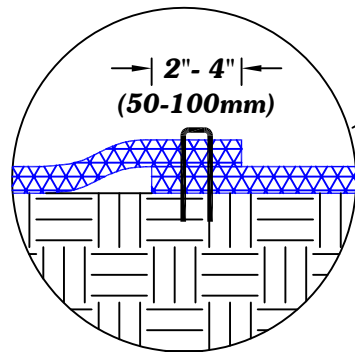
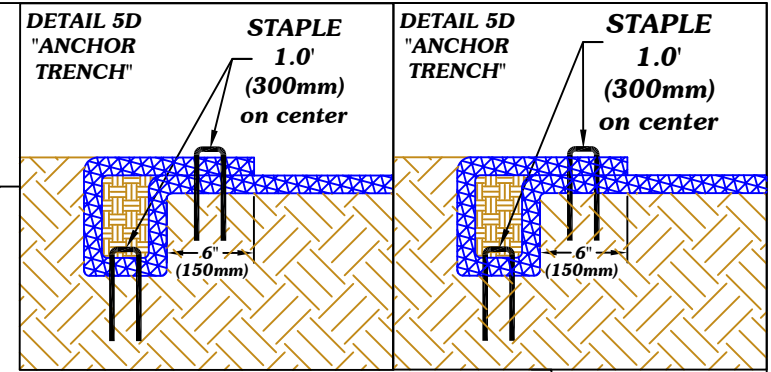
***NOTE:**
Use manufacturer's recommended staple pattern.



For further information please refer
to ECTC Installation Guidelines

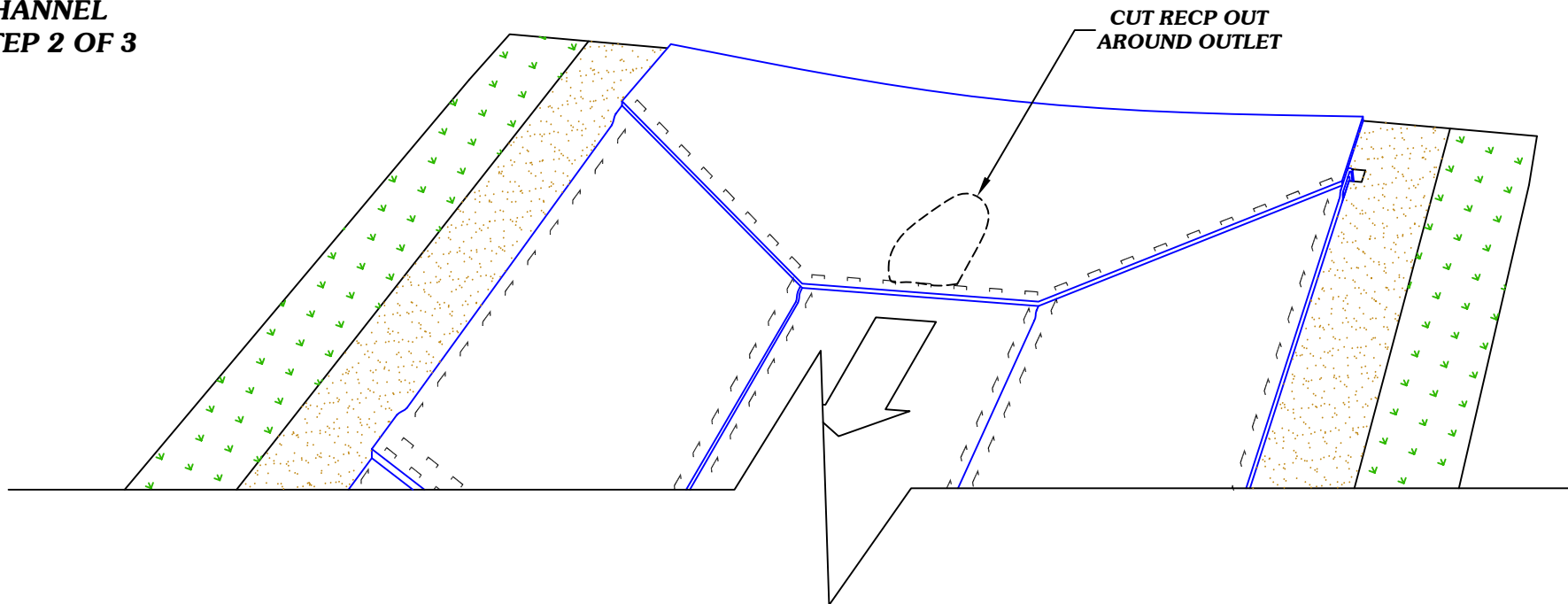


DRAWING #4
N.T.S.
**SINGLE NET
INSTALLATION**

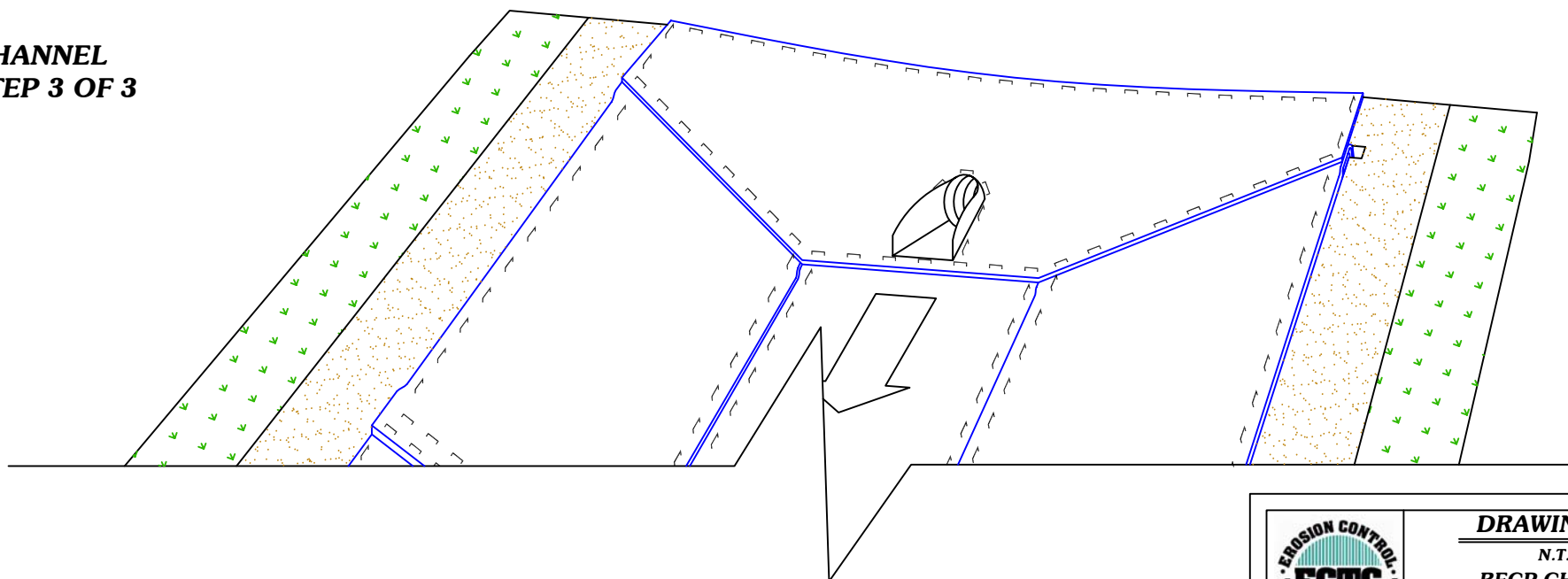


DRAWING #5
N.T.S.
DOUBLE NET/NETLESS
INSTALLATION

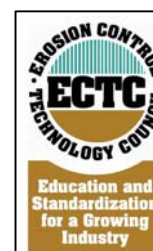
**CHANNEL
STEP 2 OF 3**



**CHANNEL
STEP 3 OF 3**



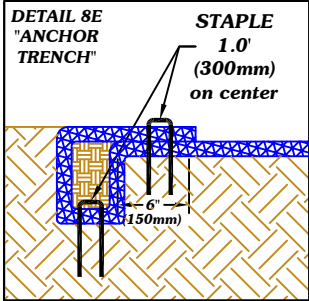
For further information please refer
to ECTC Installation Guidelines



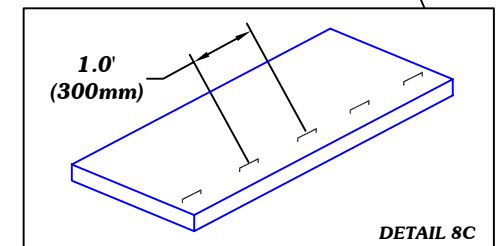
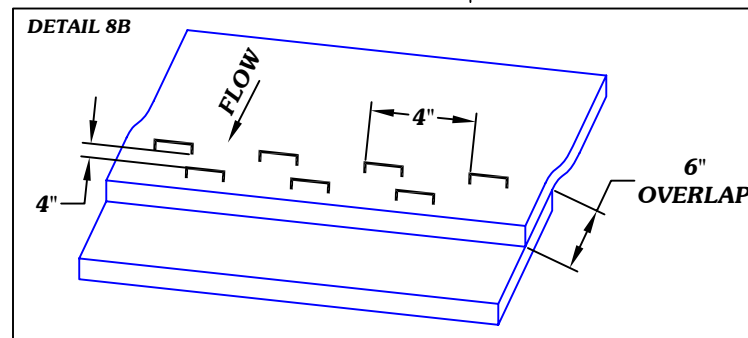
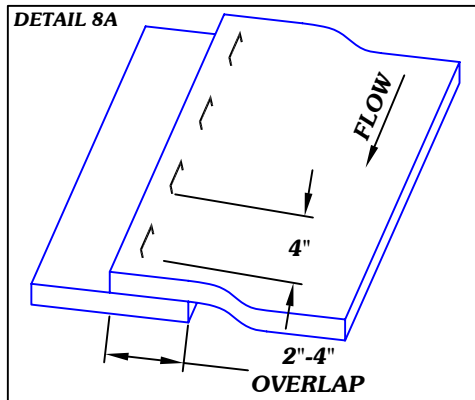
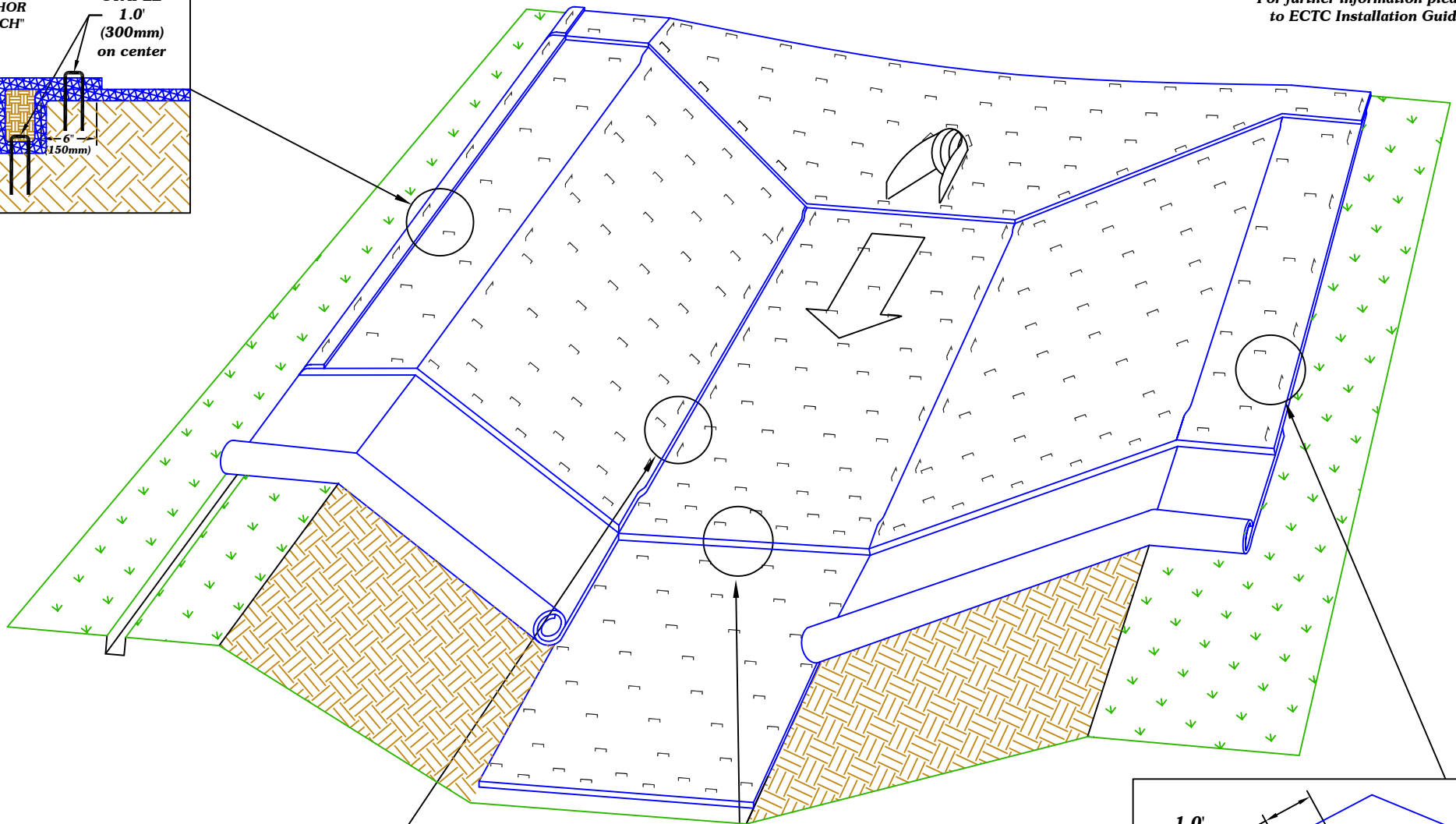
DRAWING #6.1


N.T.S.

**REC CHANNEL
INSTALLATION**



For further information please refer
to ECTC Installation Guidelines



 <p>Education and Standardization for a Growing Industry</p>	<p>DRAWING #8</p> <p>N.T.S.</p> <p>RECP CHANNEL INSTALLATION</p>